

CONTENTS.

Method of wearing drill order	Diagram No.
			I
Method of folding waterproof sheet	II
Method of attaching waterproof sheet to web belt	III
Method of wearing haversack	IV
Method of wearing waterbottle	V
Method of packing and assembling pack	VI
Method of fastening web waistbelt	VII
Position of cap badge and helmet plate	VIII
Method of wearing chinstrap on helmet, W.P.	IX
Method of wearing K.S.D. trousers with puttees	X
— do — Marching Order, Rm Band	XI
Method of fitting Corps "Flash" on Khaki Helmet	XII

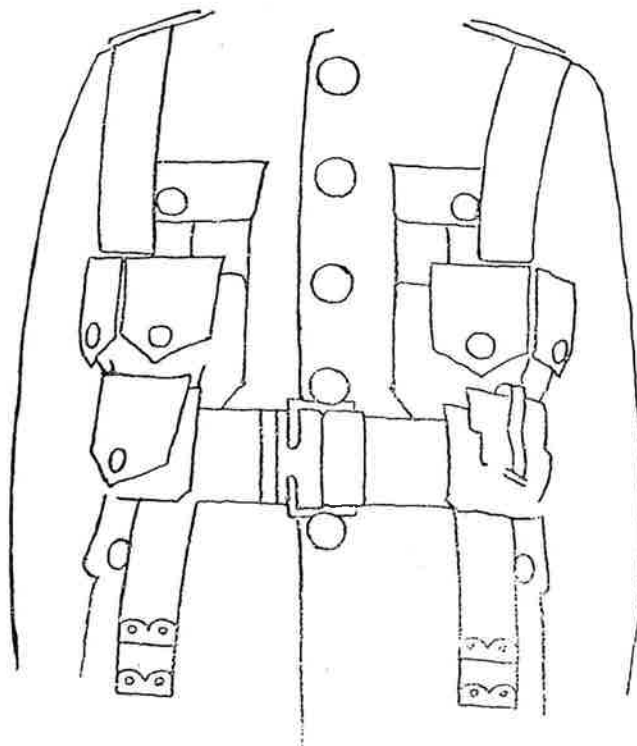
NOTES ON

DRESS REGULATIONS

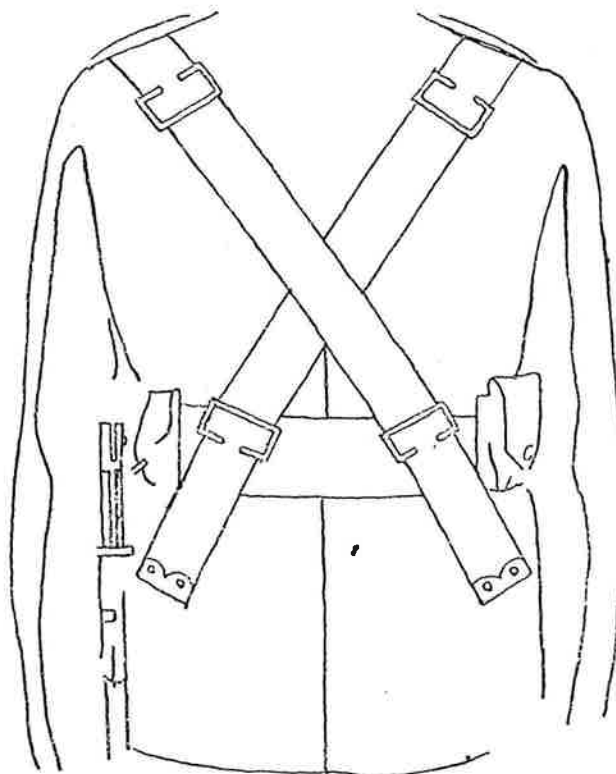
ROYAL MARINES

Royal Marine Band, Plymouth.
1st January 1936

1.—Method of Wearing Drill Order.

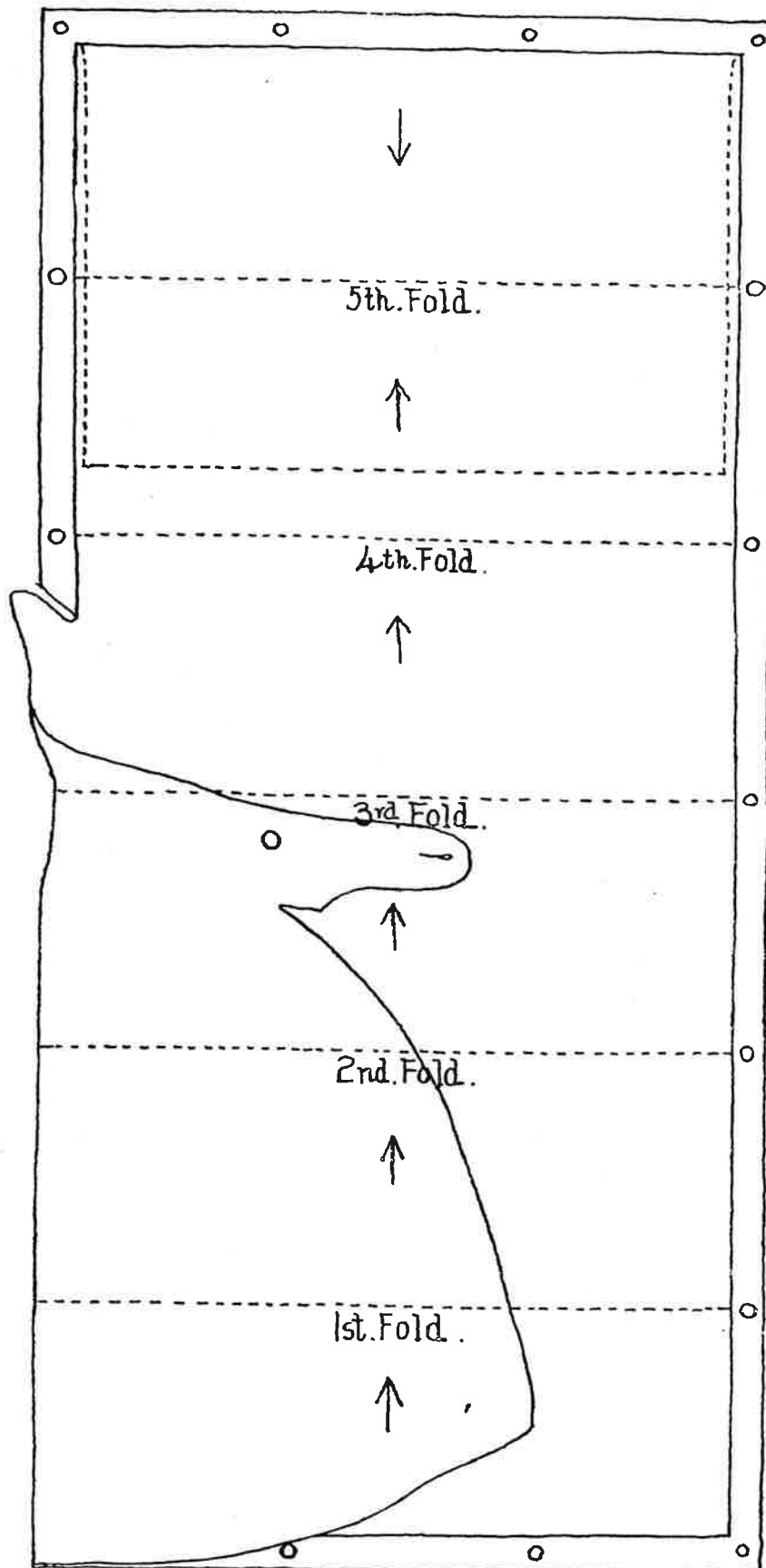


1. Braces in rear of breast pocket buttons, but as close to them as possible.
2. Buckle of belt in centre of fourth and fifth buttons (both buttons showing).
3. Belt fitted on the hooks of tunic. This prevents the weight of the bayonet pulling down on the left side.
4. Curl at buckle of belt to be tight.



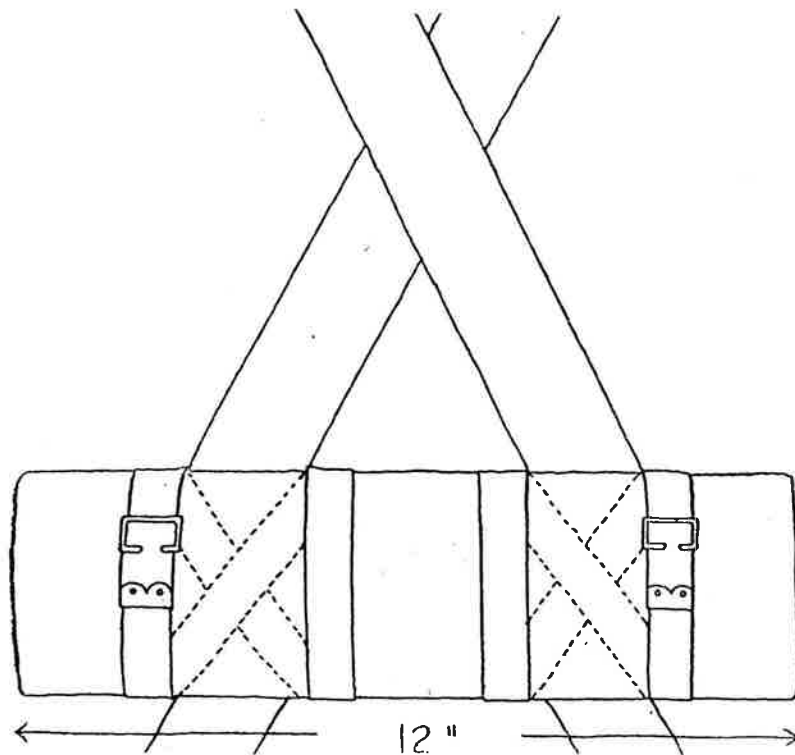
1. Braces crossed left over right.
2. "D's" two inches from rear edge of shoulder strap.

II.—Method of folding Waterproof Sheet.



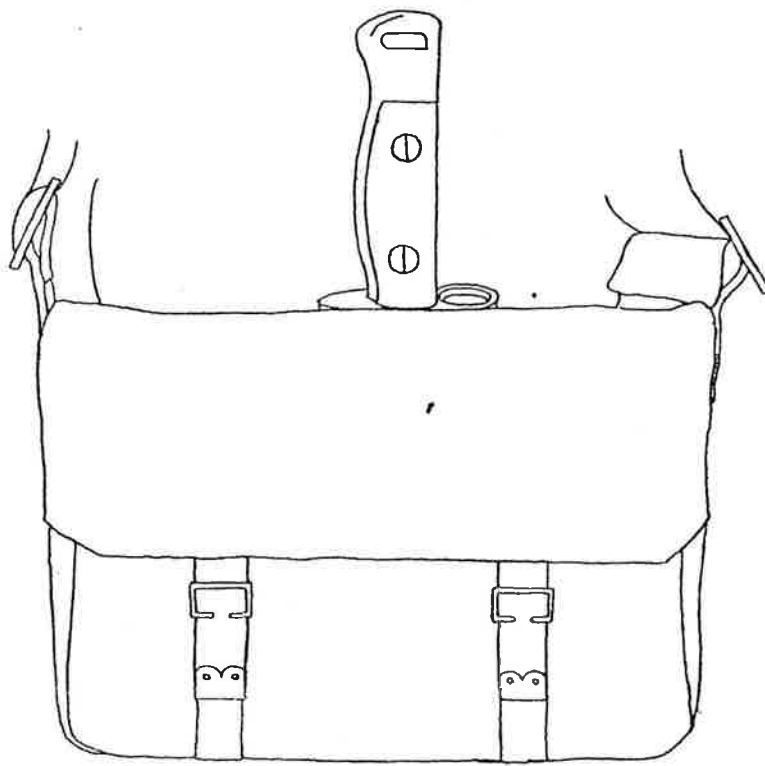
WATERPROOF SHEET WILL BE FOLDED AS FOLLOWS :—Neck and triangular portion folded in. Commencing from the double end, sheet will be folded in five folds, lace hole to lace hole, the fifth fold being folded back across the fourth, about three parts of the way in, so that when folded back the sheet will be

III.—Method of Attaching Waterproof Sheet to Web Belt.

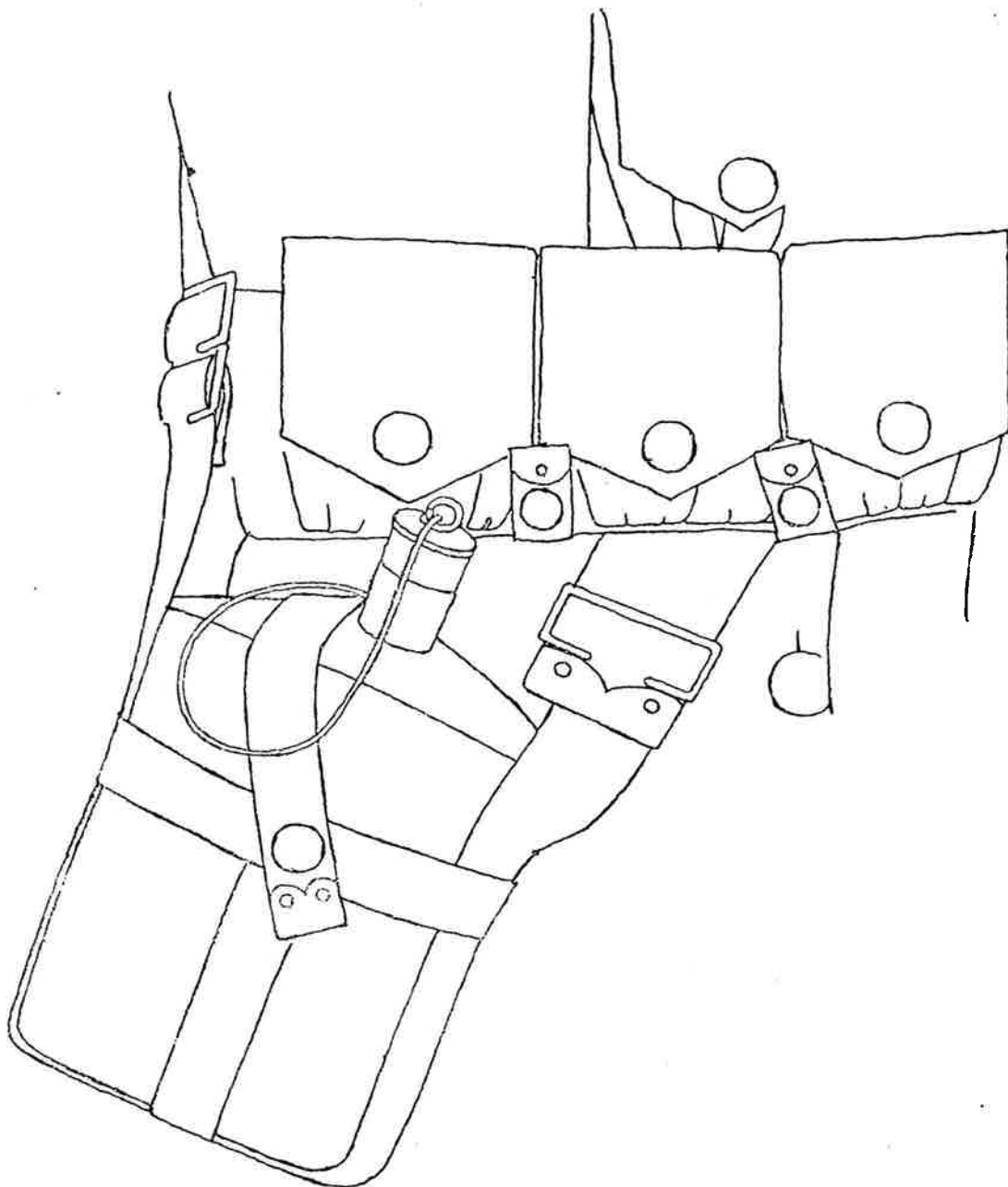


Start with the supporting strap on the outside of the sheet, buckle on top and on the outer side of the brace. Bind sheet to the belt by passing strap downwards on the outside and upward on the inside of the belt and brace ; then downward on the outside of belt and inside of brace, and then crossing at the back of belt to top of brace and buckle ends together.

IV.—Method of Wearing Haversack.

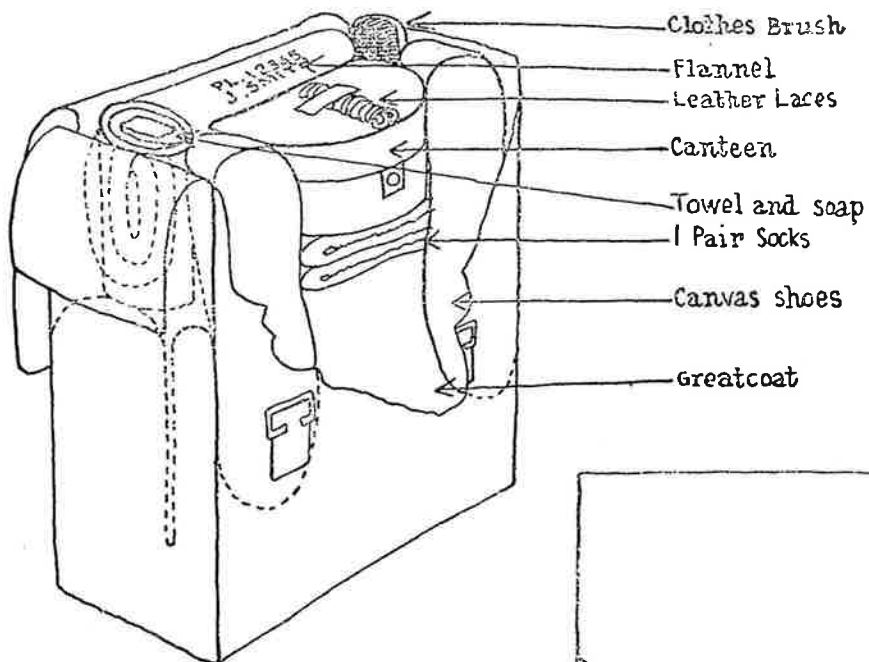


V.—Method of Wearing Waterbottle.

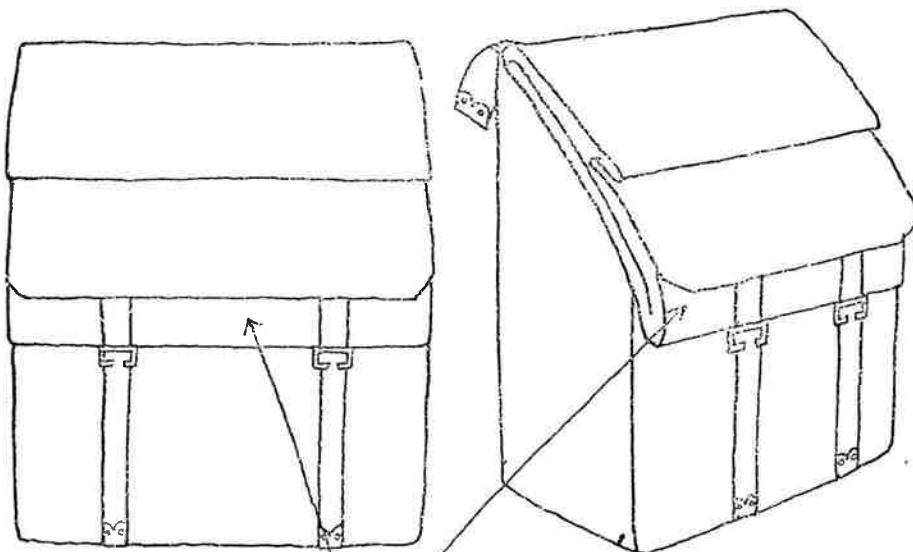
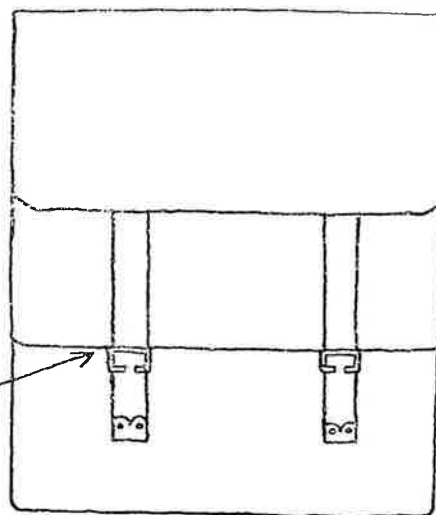


Front attachment of waterbottle will be back between the two straps which attach the right cartridge carrier to the belt. "D" of front attachment will be close down on brass tab of brace. "D" of rear attachment will be close up to "D" on waistbelt. Strap of waterbottle carrier will be in rear of cork. Cork

VI.—Method of Packing and Assembling Pack.



Bottom edge of Waterproof Sheet in line with top edge of D's

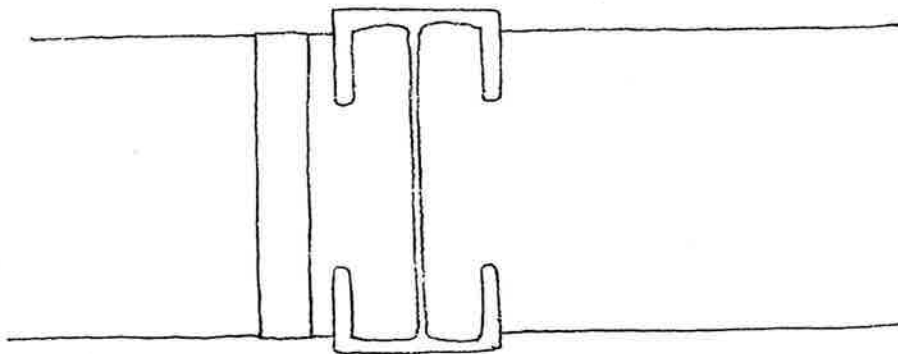
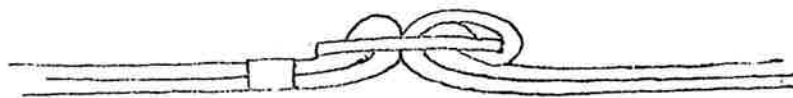
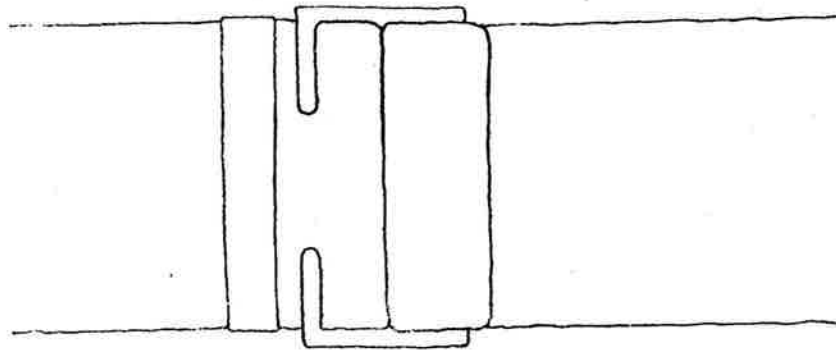


waterproof Sheet

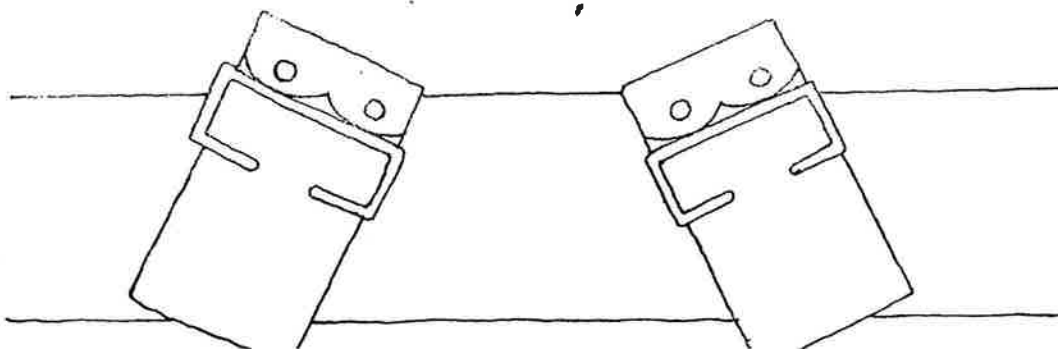
When Greatcoat is not carried in pack, the bottoms of the brass tabs will be in line with the bottom of the pack, and the flap of the pack will be folded over.

VII.—Method of Fastening Web Belt.

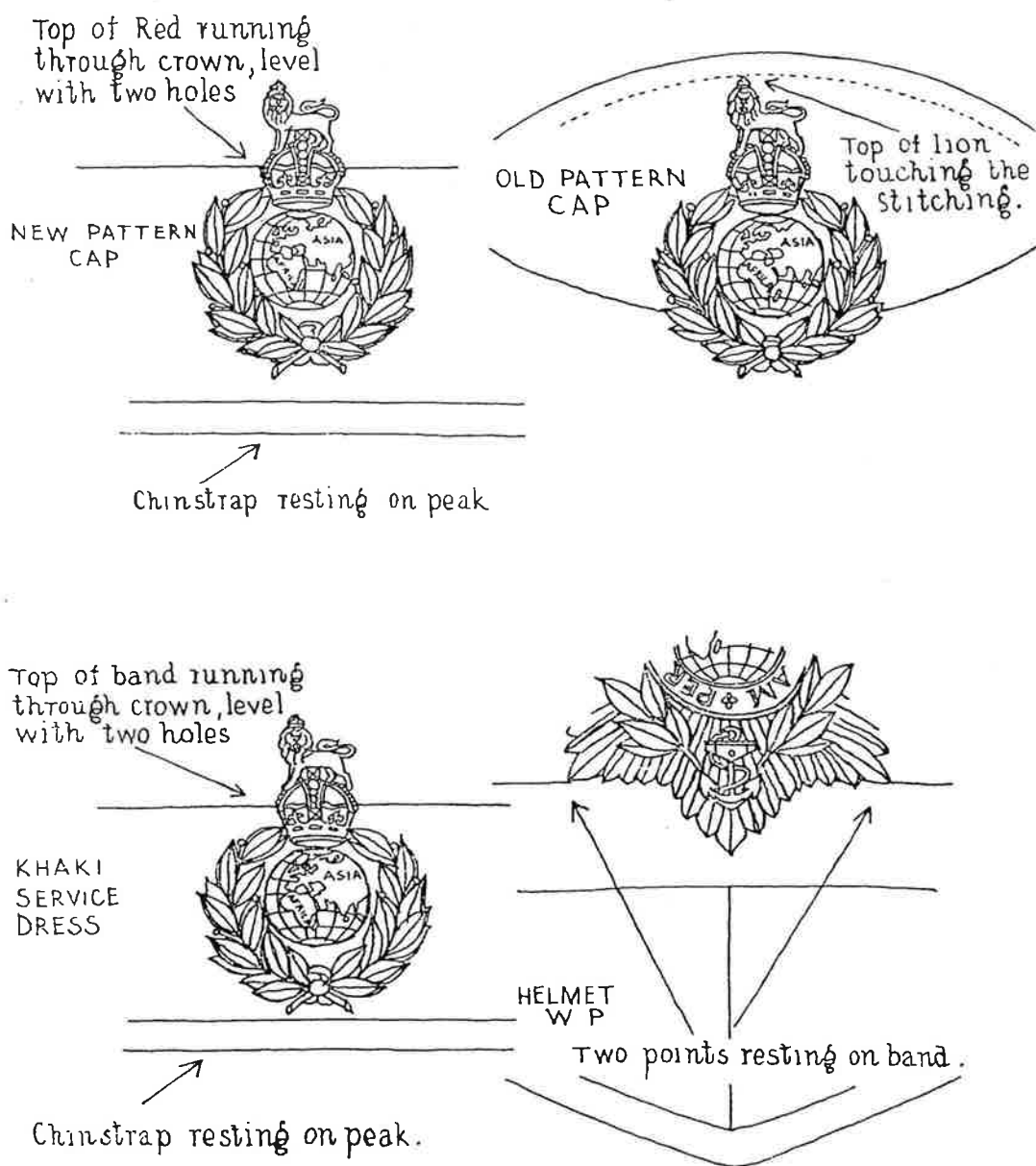
1. WHEN SIDE ARMS ARE WORN.—As for drill order, *i.e.*, belt curled on buckle.



2. WHEN SIDE ARMS ARE *not* WORN.—Pass end through open part of buckle and then through centre opening to the left, inside belt.

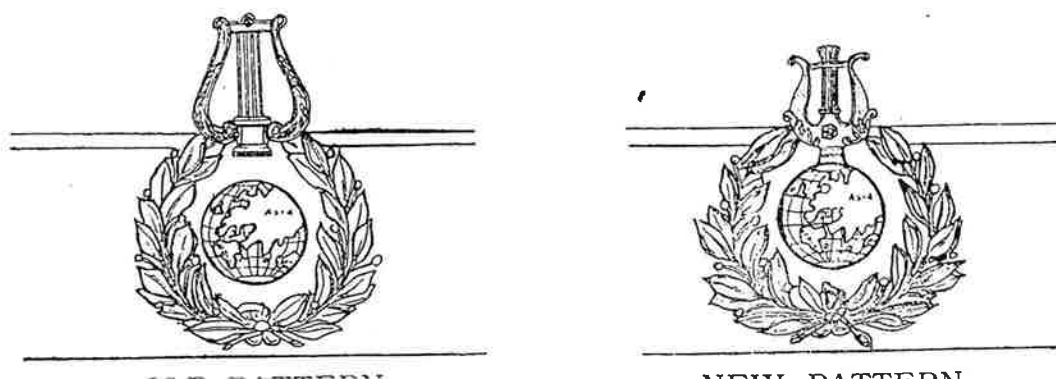


VIII.—Position of Cap Badge and Helmet Plate.



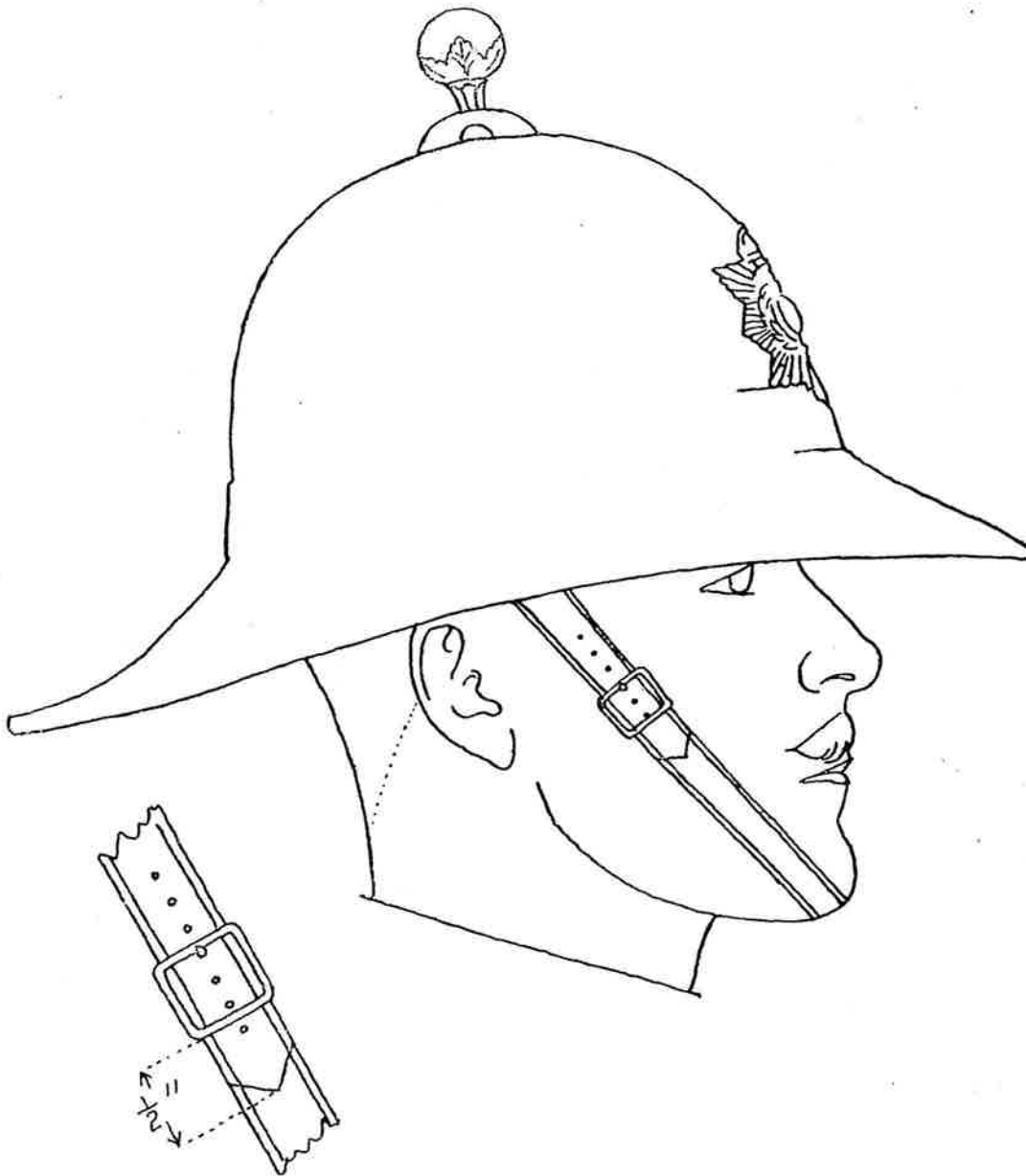
AMENDMENT No. 1.

Diagram VIII. Add:—



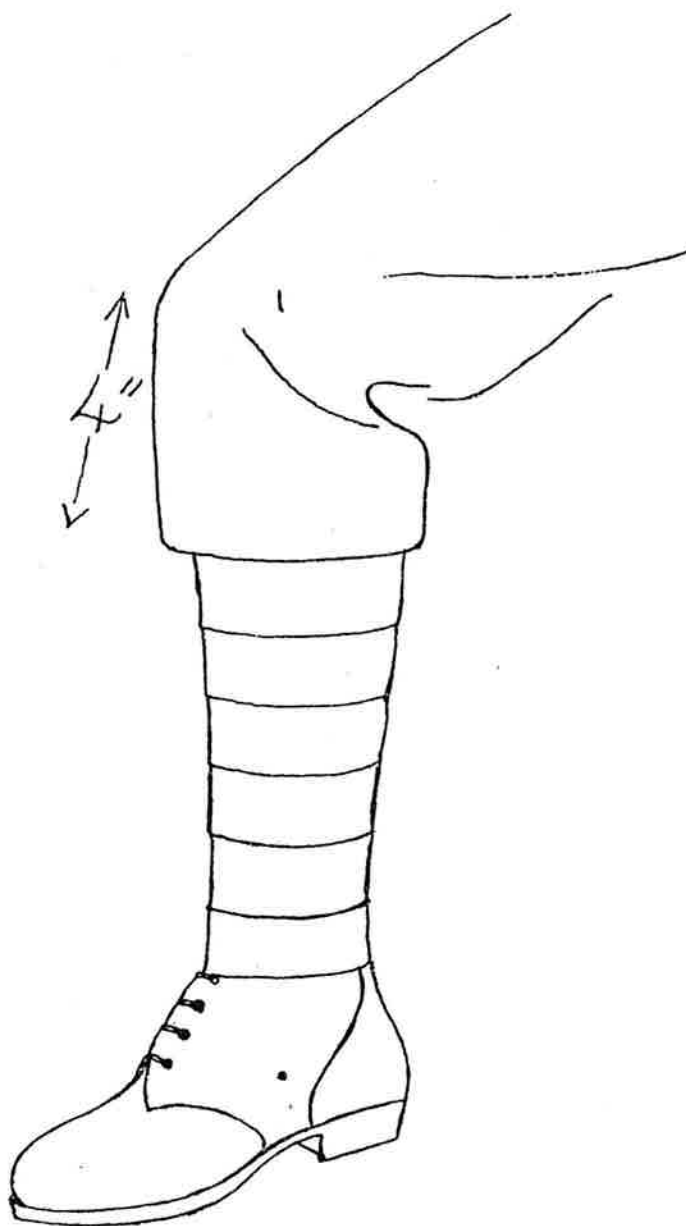
IX.—Method of Wearing Chinstrap on Helmet, W.P.

Buckle will be worn on right cheek bone. Spare end of chinstrap will be half an inch in length and pointed.



502
37. Pulling / chin strap.

X.—Method of wearing khaki service dress trousers with puttees.



1. The trousers will be crossed four inches below the knee, care being taken

NOTES.

Medals and Medal Ribbons.—(Appendix to Navy List). The position of medals when on Cloth Tunic is as follows :—

Upper edge of bar will be midway between first and second buttons of Tunic, the inner edge of the senior decoration or medal commencing one inch inwards from line of the ends of the button holes. The outer ribbon will be half an inch clear of sleeve seam. The bar will be horizontal.

Medal Ribbons will be sewn on the Blue Serge Tunic and Service Dress Jacket. On the Khaki Drill Tunic ribbons will be worn on a bar or bars. The ribbons will be half an inch in length. Ribbons will not be worn for training other than that necessary for the purposes of ceremonial drill. The ribbons will be sewn on in proper sequence, the senior decoration or medal commencing from the inner edge of the top row ; they will not overlap and when there is not sufficient room to wear them in one row they will be worn in two or more rows, the bottom edge of the lowest row being half an inch above the upper edge of the pocket with quarter of an inch interval between the rows. The ribbons will be sewn centrally above button of the pocket flap but there will be a space of not less than one inch from the line of the ends of the button holes and not less than half an inch between the outer ribbon and the sleeve seam. When two or more rows are worn the upper rows will be completed first. When there is a less number of ribbons in the second or subsequent rows the shorter rows will be arranged centrally above the button of the pocket flap.

Web Equipment.—The inside of flap of haversack and the inside front of cartridge carriers will not be blanched.

Web pouches and flaps will be flattened out when wet.

Rifle Sling—End of sling attached to butt swivel will be as close to swivel as brass end will allow.

When the pack is worn the "D's" on the braces will be as close as possible to the shoulder straps on the jacket so as to bring the pack as high as possible.

Rivets between pouches of cartridge carriers, on frog and on entrenching tool carrier will not be polished ; they will be blanched in such a manner that they are invisible.

The practice of punching holes in the flaps of the pack and drawing the flaps together with a lace is not permitted.

The waterbottle cork lanyard will be kept clean but will not be blanched white.

The edges of all brasswork, *i.e.*, "D's" and buckles will be rubbed smooth and polished.

Buff Equipment.—Both belt and frog will be on the hook on the Tunic. Studs on pouch and frog will be cleaned and free from blanco. Stitching holes will not be pricked out with pencil.

Position of fixed runner on rifle sling :—

Top edge of fixed runner will be in line with top edge of magazine (when viewing the rifle at the "order").

Steel Helmet.—Buckle of the chin strap will be worn on the left side.

Method of attaching Helmet Bag—Marching Order.—When parading for embarkation the helmet bag containing the forage cap will be attached to the supporting strap as close as possible to the left carrier.

Knife Lanyard.—The knife lanyard as issued will be worn when parading in marching order. The wearing of the Naval pattern white lanyard is not permitted.

Walking Out Cane.—The practice of strapping the walking out cane on the rifle is not permitted.

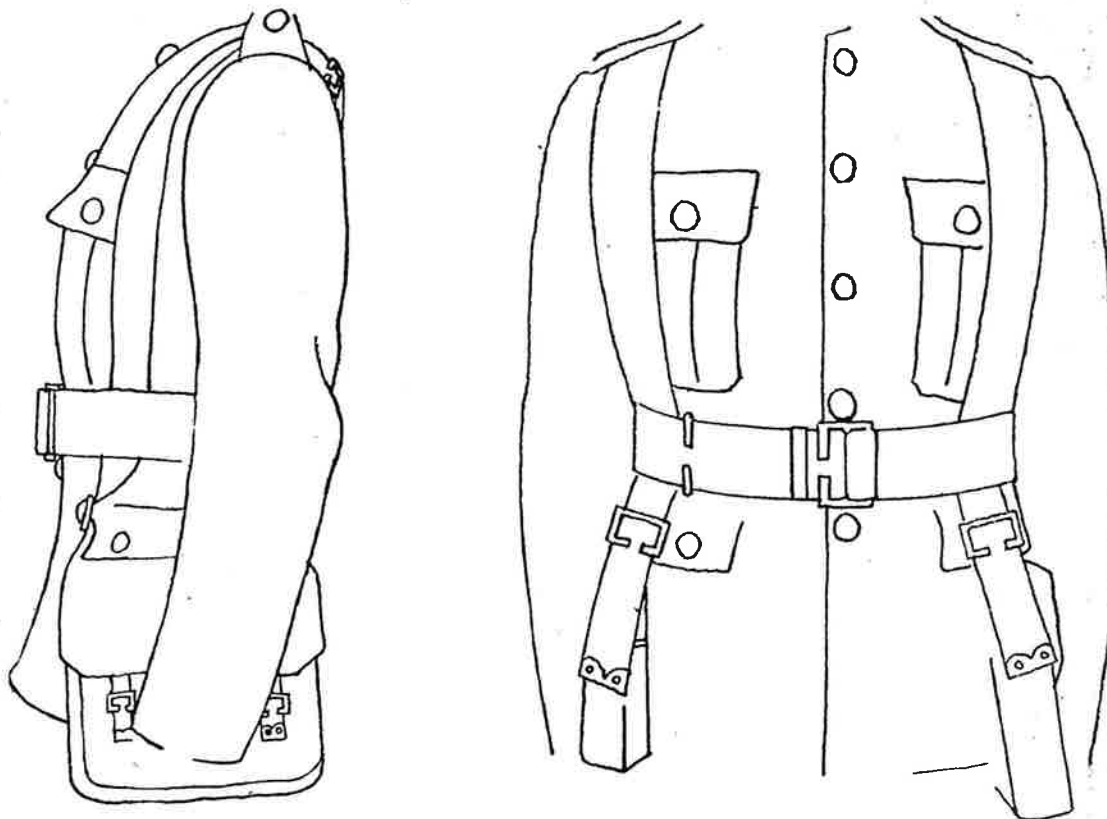
Sashes.—Will be worn in Nos. 1, 2, 6 and 7 dress. When worn with the Cloth Tunic, the sash will be fitted under the second button covering the third and fourth buttons. When worn with the Serge Tunic the Sash will cover the second button. It will not be worn outside the Tunic.

362

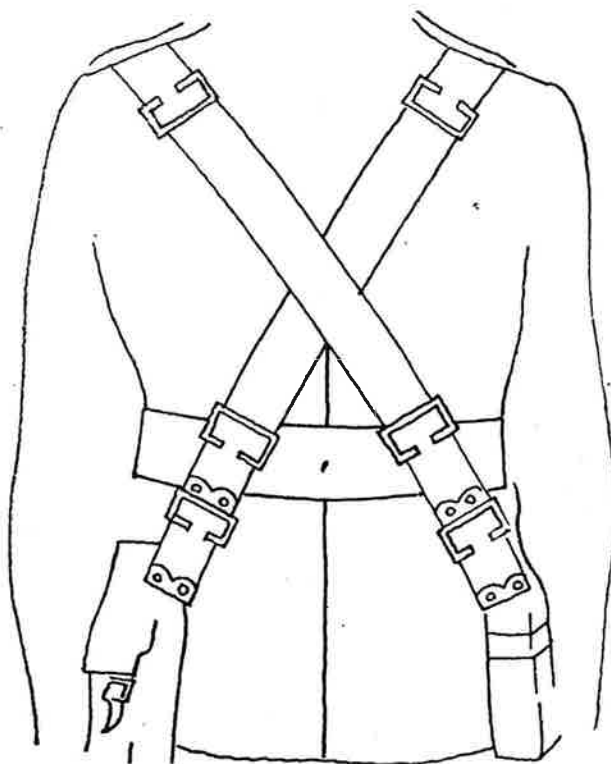
36

Amendment No. 2—To be inserted at end of pamphlet.

XI. Method of Wearing Marching Order—R.M. Band.

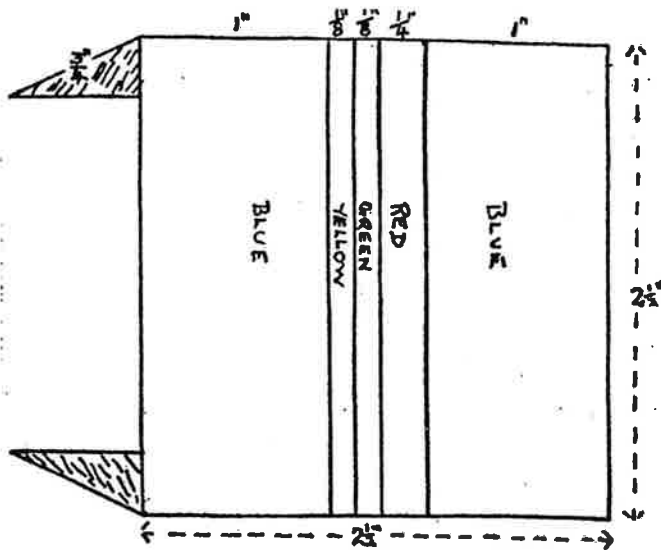


Note:—Braces are not to be crossed in front of the body. They should pass under the waistbelt, the ends being attached to the waterbottle and haversack respectively.



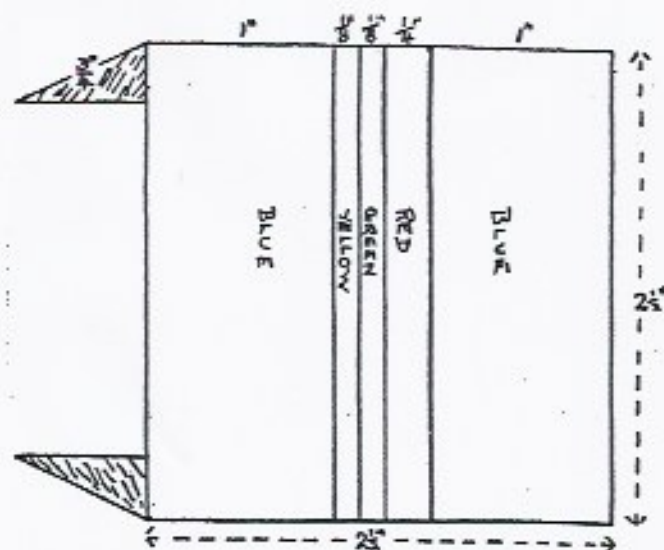
Amendment No. 3—To be inserted at end of pamphlet.

XII.—Method of Fitting Corps "Flash" on Khaki Helmet.



Note:—To be fitted, yellow stripe to the front, over the centre of the pagri on left side of helmet, the top level with the third band of the pagri; four inches of corps ribbon, 2½ inches wide, turned in at top and bottom, the depth of "flash" when fitted to be 2½ inches.

XII.—Method of Fitting Corps "Flash" on Khaki Helmet.



Note:—To be fitted, yellow stripe to the front, over the centre of the pagri on left side of helmet, the top level with the third band of the pagri; four inches of corps ribbon, $2\frac{1}{2}$ inches wide, turned in at top and bottom, the depth of "flash" when fitted to be $2\frac{1}{2}$ inches.